

[18F]FDG-PET WORKSHOP – Second edition

Assessing Brain Glucose Metabolism
in Patients with Disorders of Consciousness
from acquisition to interpretation



25.02.2026



Virtual



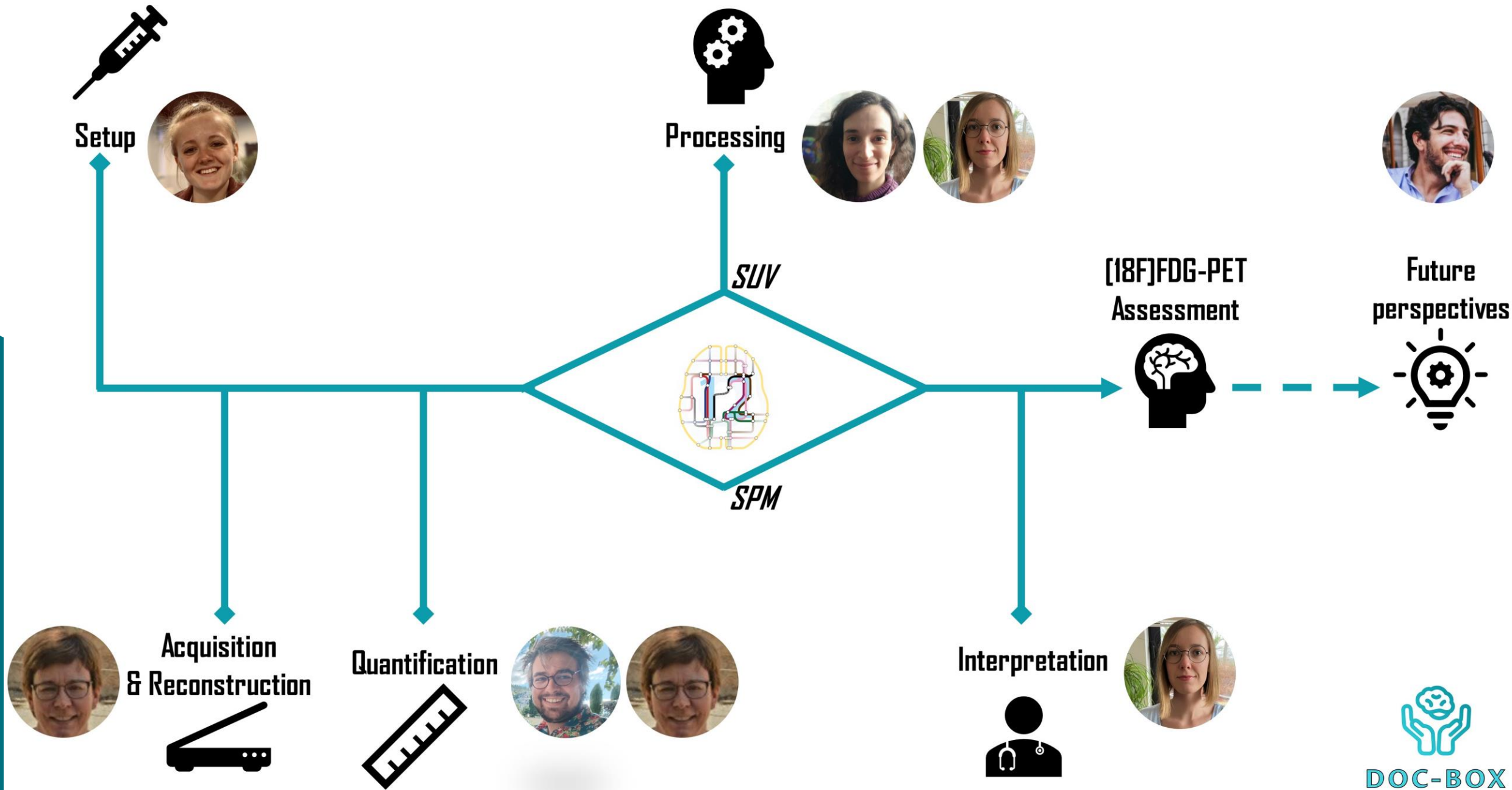
Free registration

Welcome and Introduction to [18F]FDG-PET

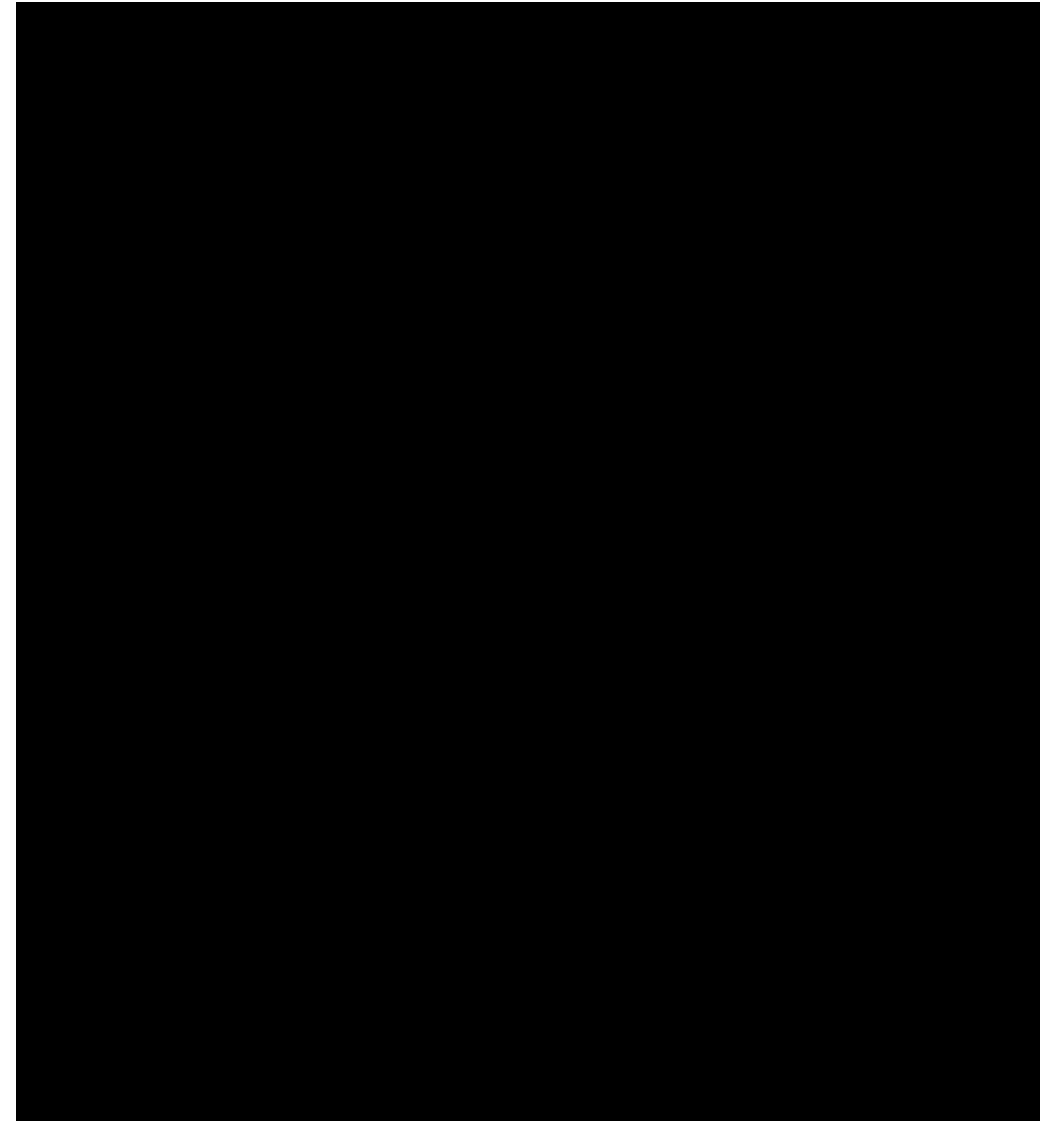
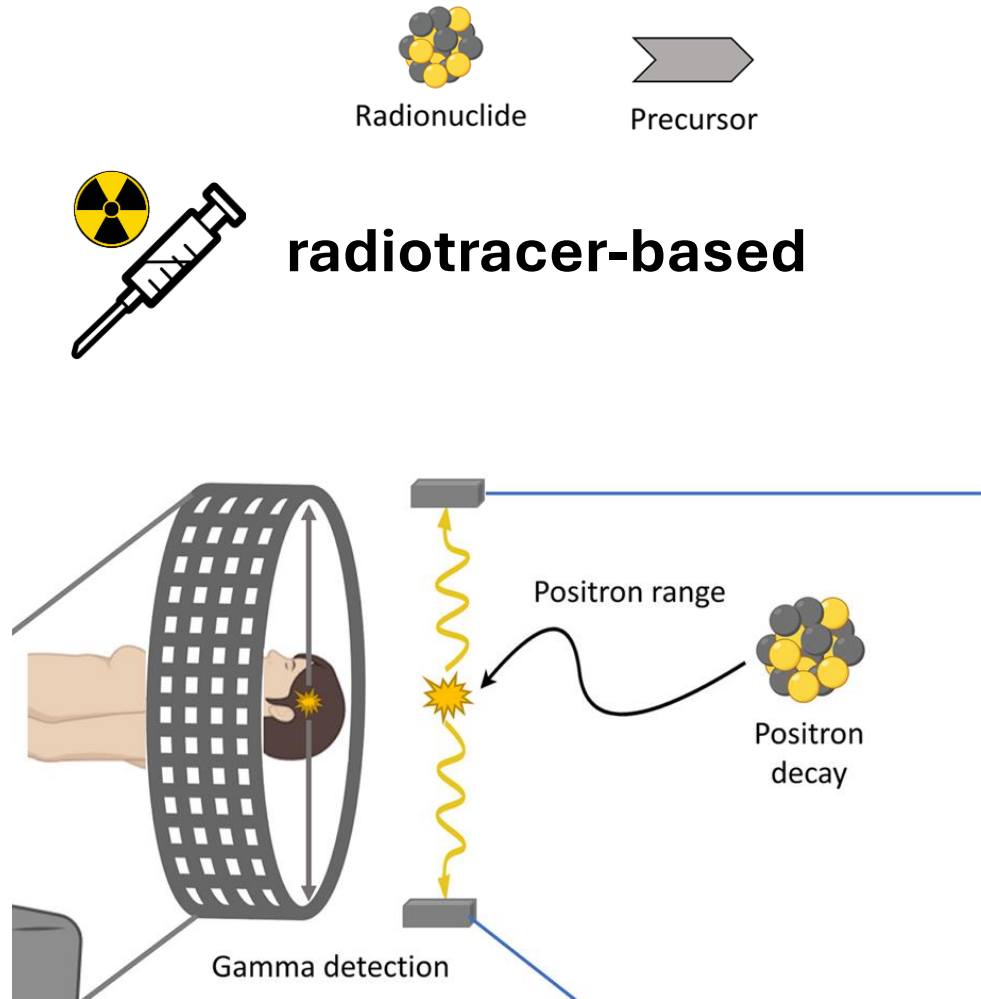
Arianna Sala

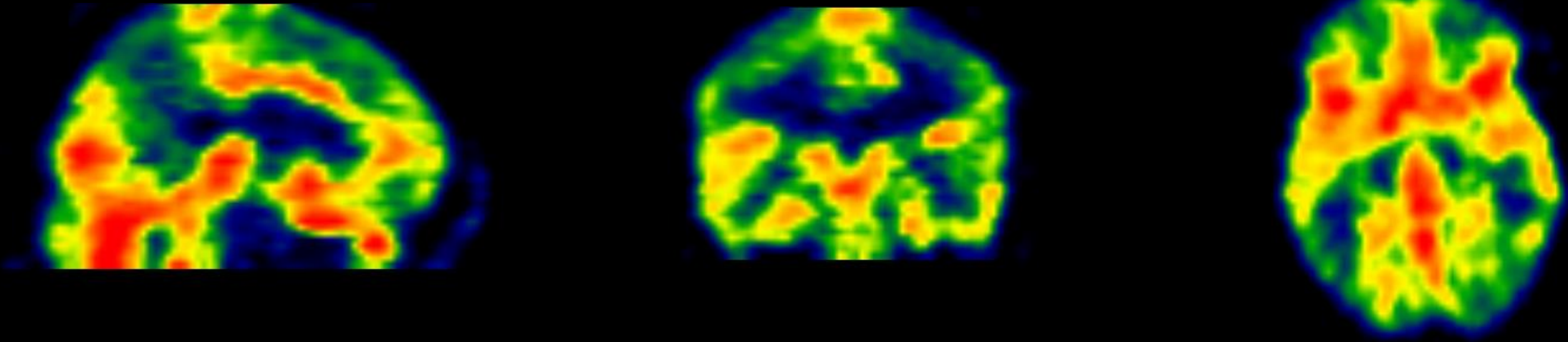
Coma Science Group &
NeuroRecovery Lab, GIGA Institute, Uliège

Clinique de la Conscience
et NeuroRevalidation,
Service de Neurologie,
CHU Liege

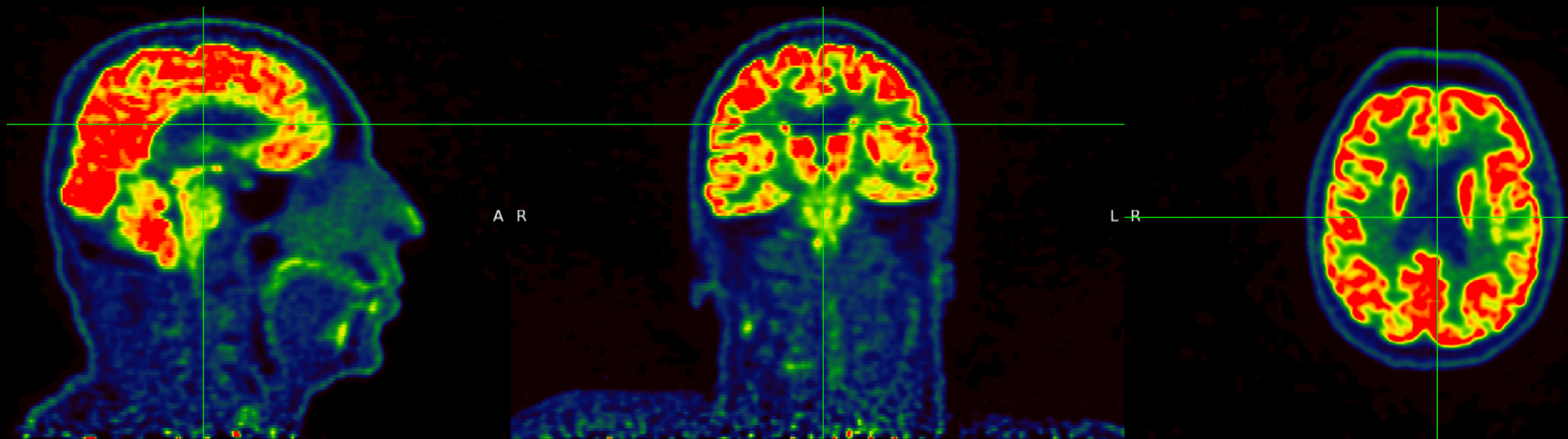


What is Positron Emission Tomography (PET)?



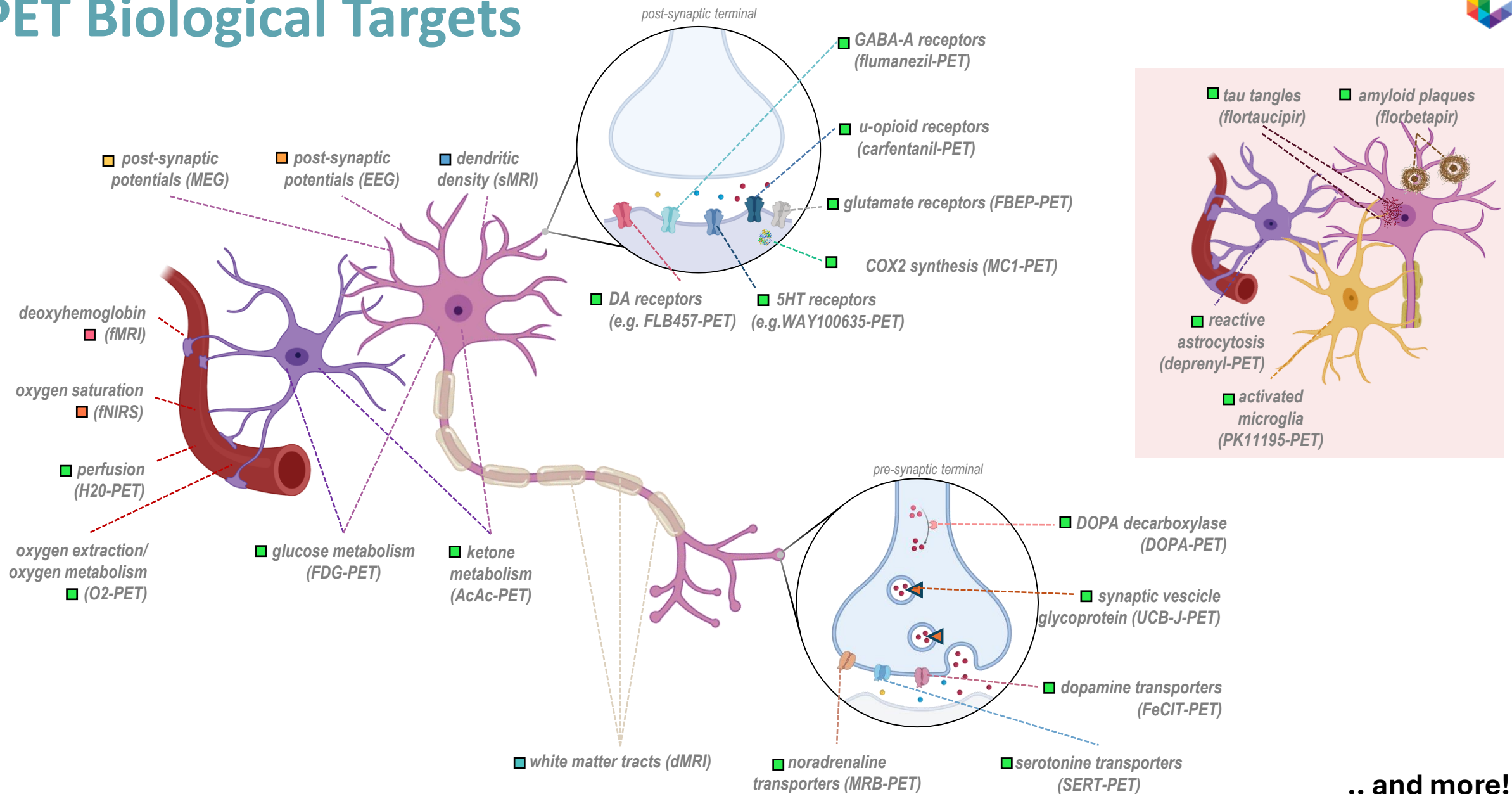


Courtesy of Christian Degueldre, University of Liege



Siemens Biograph Vision 600

PET Biological Targets



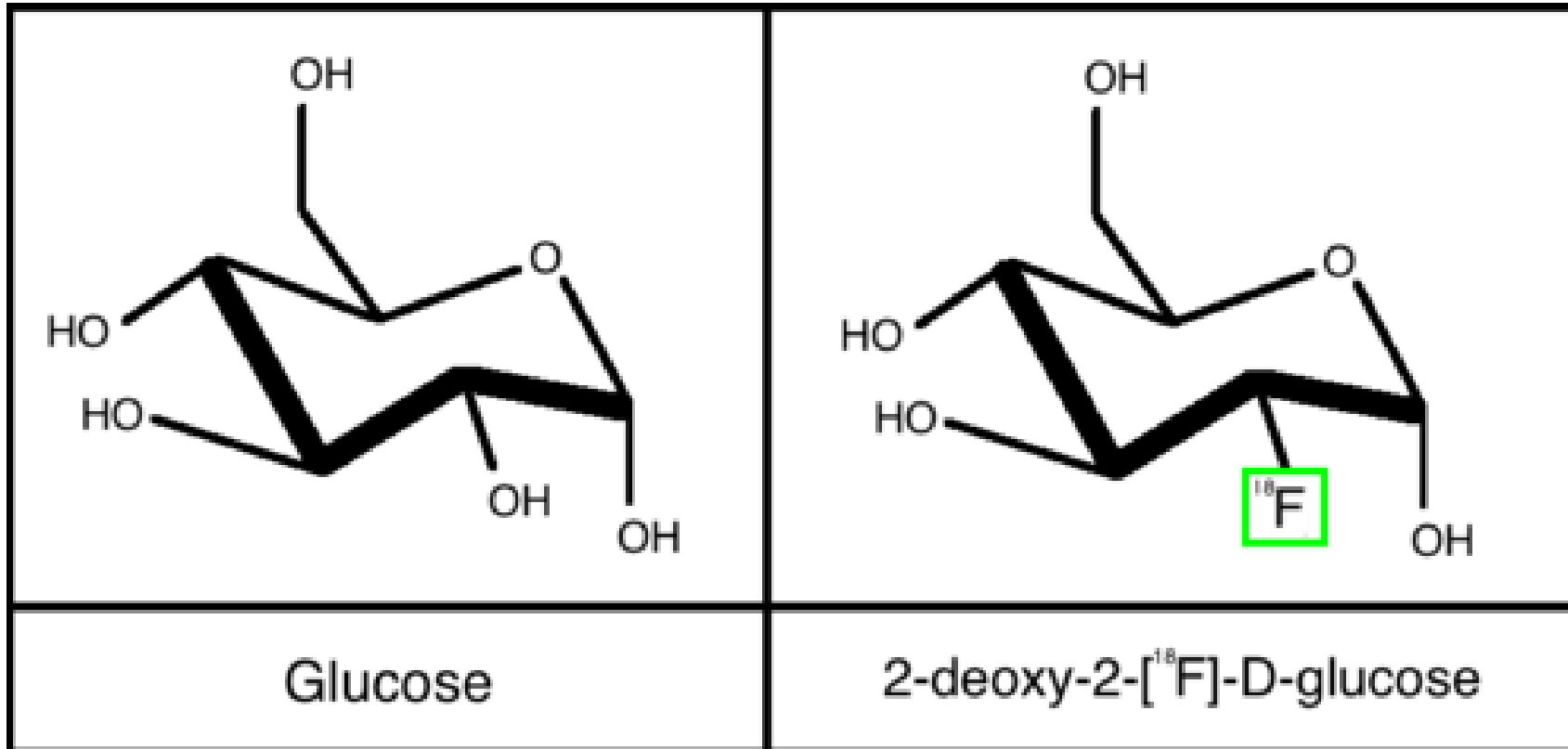
■ PET
 ■ dMRI
 ■ sMRI
 ■ fMRI
 ■ EEG
 ■ MEG
 ■ fNIRS

Sala et al., 2023 TICS

.. and more!



Paradigmatic example: ^{18}F -FDG



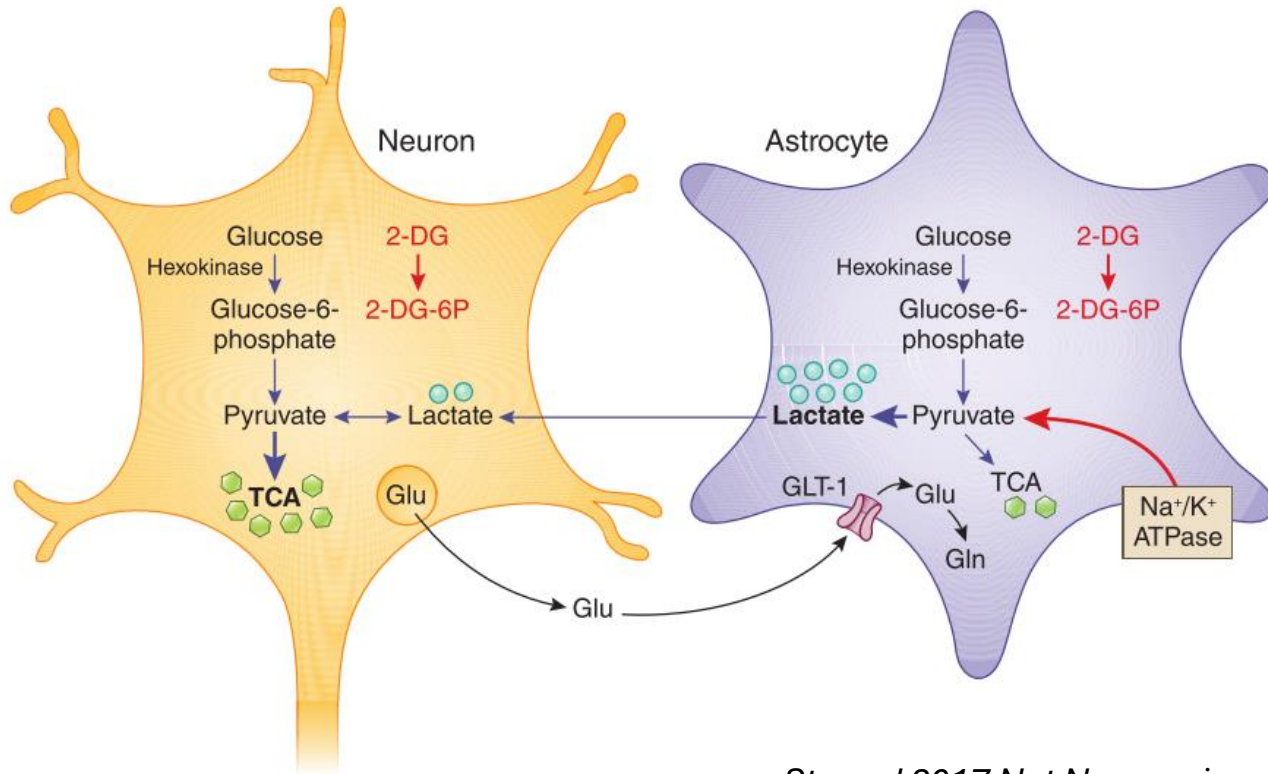
[¹⁸F]FDG-PET (glucose) and the brain



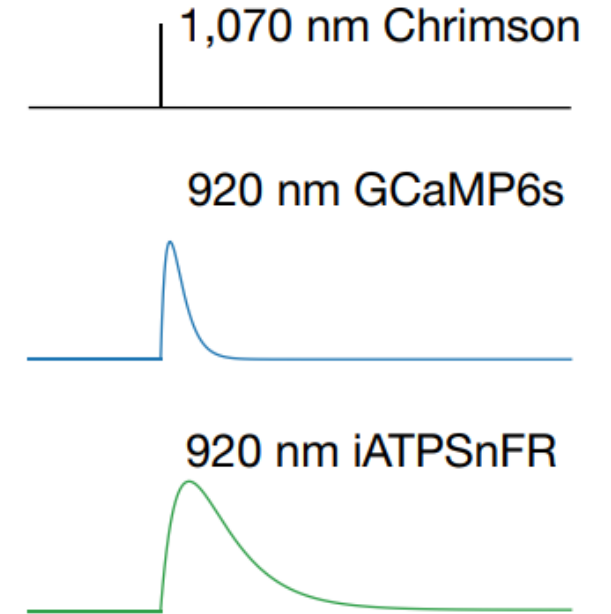
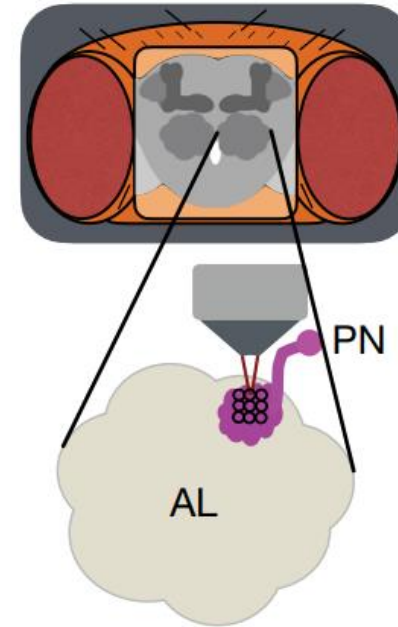
2%

20%

[¹⁸F]FDG-PET (glucose) in pDoC: why



Stoessl 2017 Nat Neurosci



Mann et al 2021 Nature

FDG-PET in DOC

- Resting state (no passive or active tasks)
→ circumvent motor, language & attentional biases
- Scientific & clinical insights

