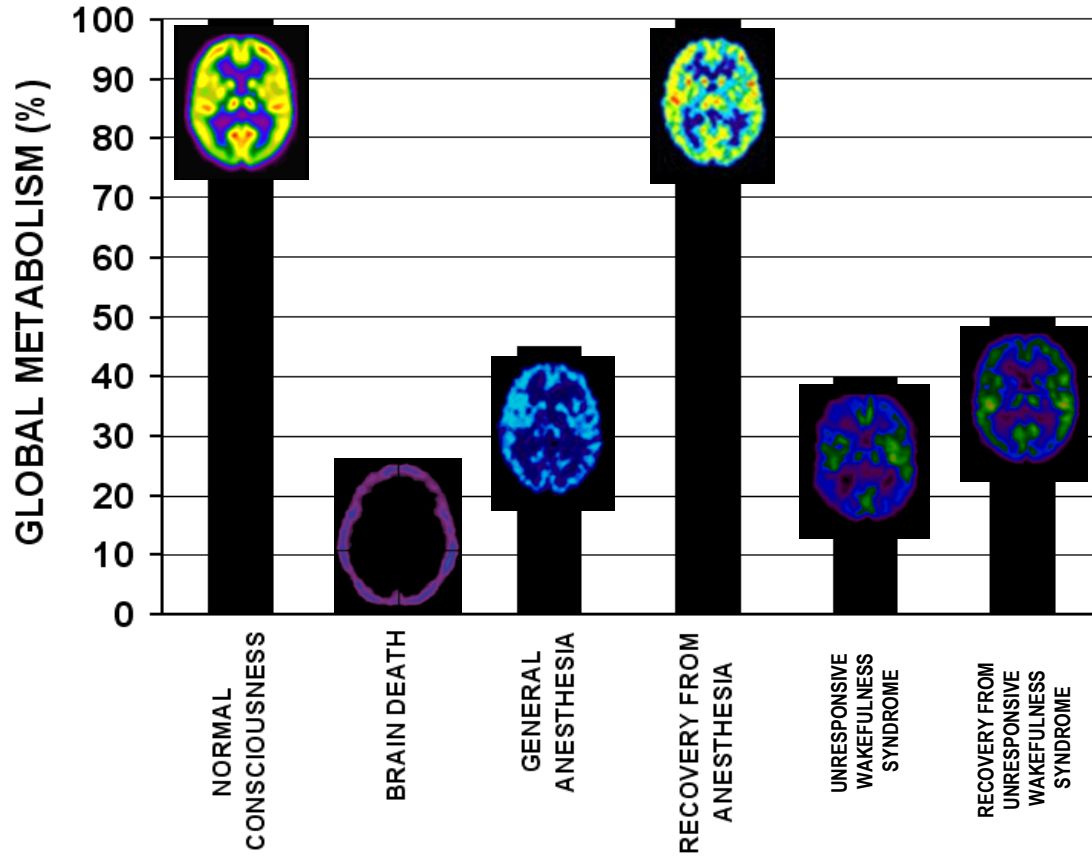


FDG-Positron emission tomography Standardized uptake values (SUV) Clinical cases

CSG PET workshop

Aurore THIBAUT, PhD
Coma Science Group
GIGA-Consciousness
University Hospital & University of Liège

Global brain metabolism

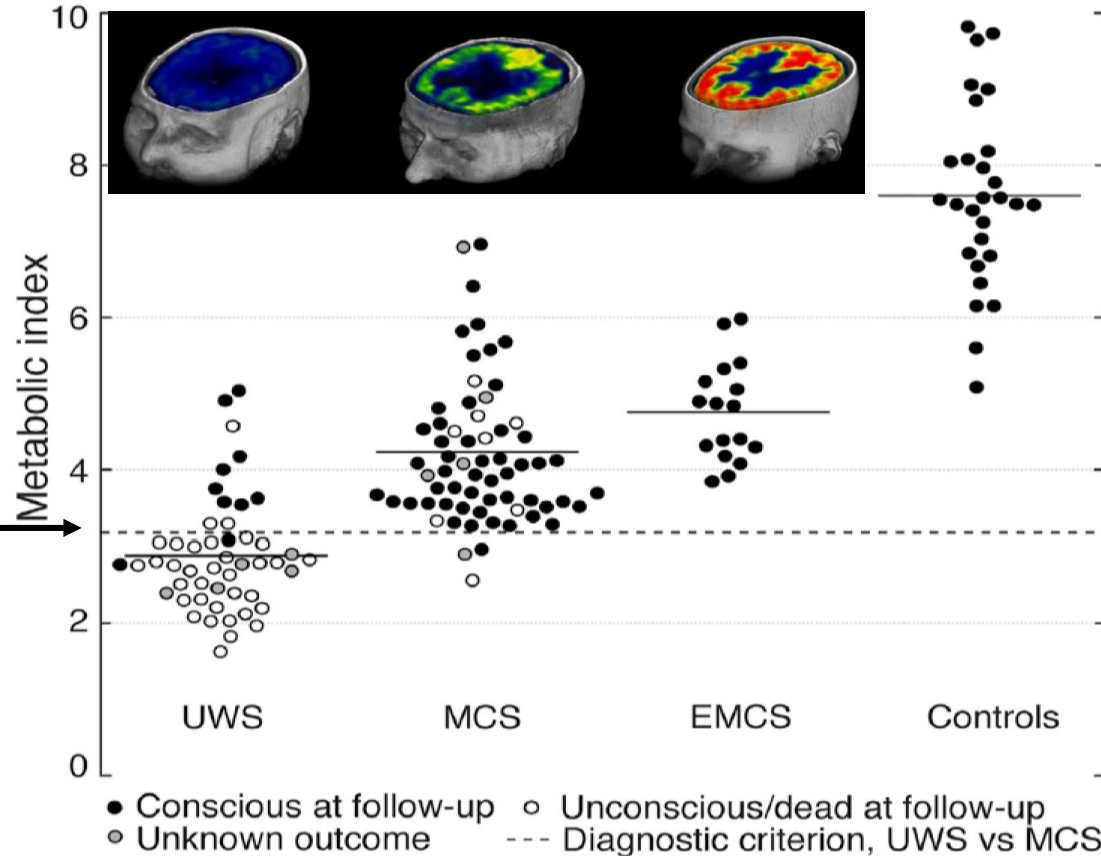


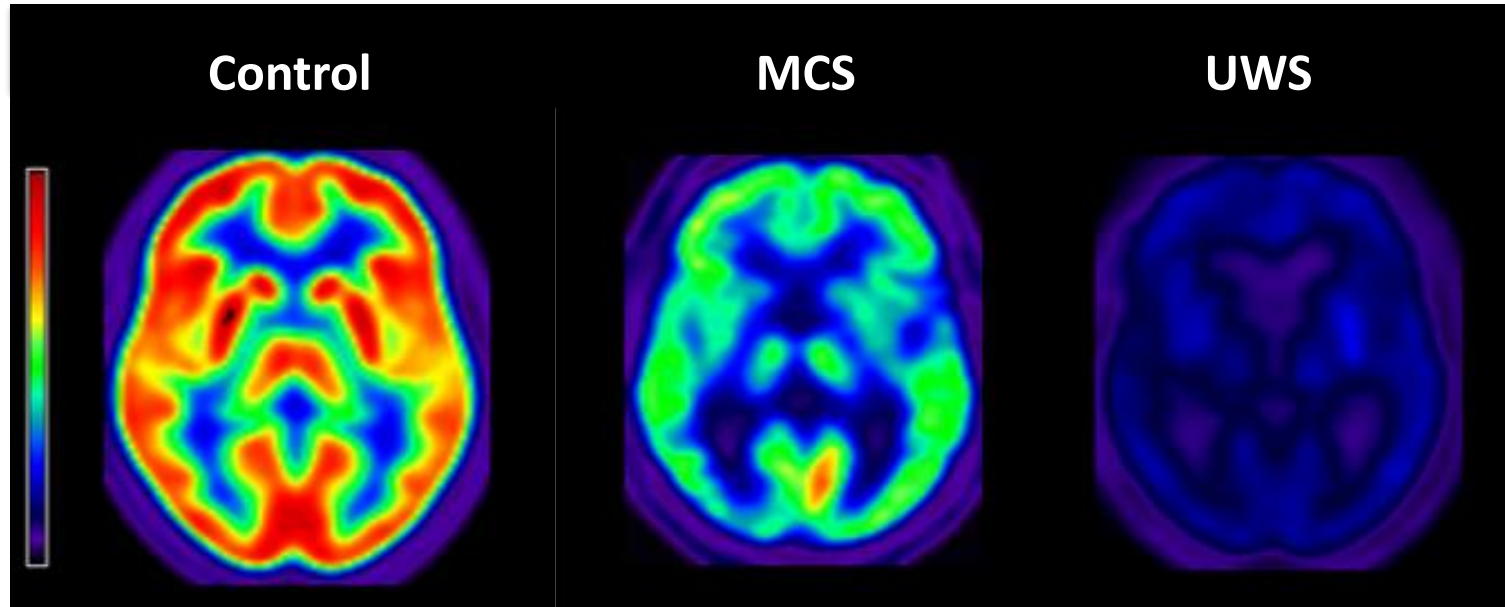
Global brain metabolism



Minimal Energetic Requirement

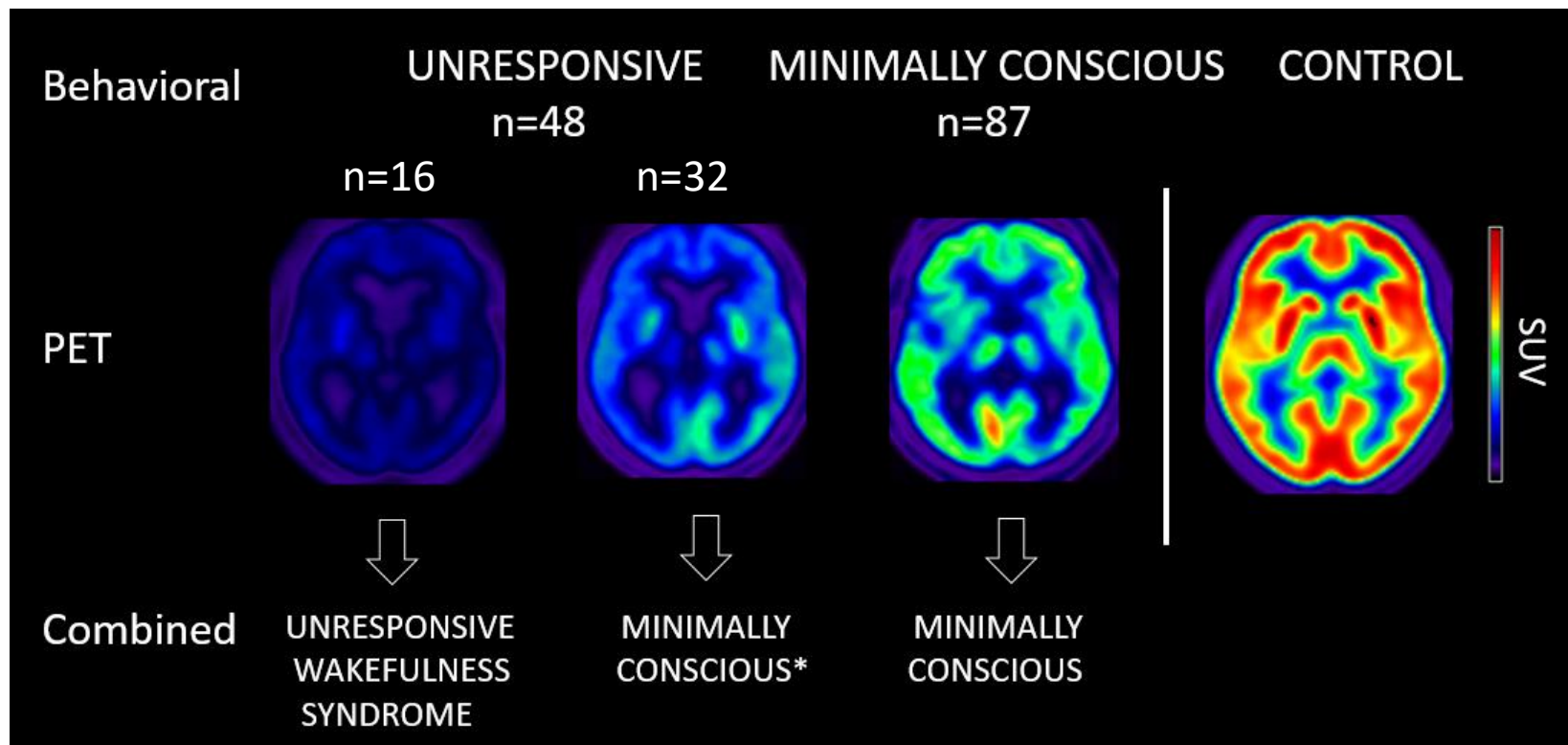
min 42% 'conscious'





→ MRICroN – color NIH – scale 0 – 12
Activity in the fronto-parietal network

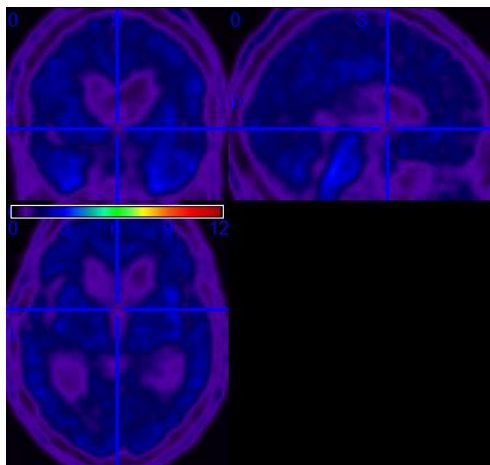
MCS* - covert awareness



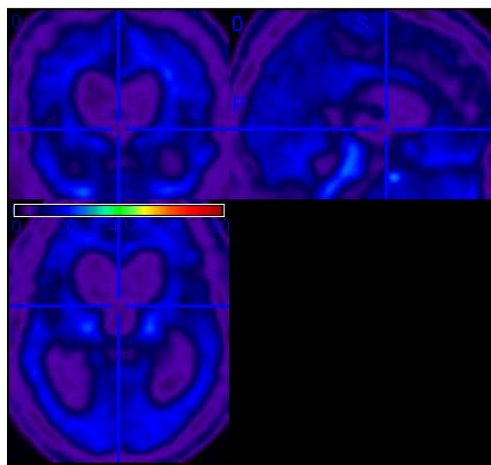
SUV - UWS



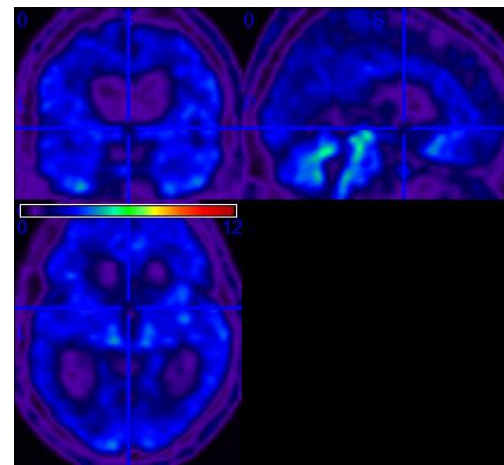
46 yo woman
5 months post anoxia
CRS-R: UWS (6)
Pres: 22%
Outcome: death



30 yo man
24 months post anoxia
CRS-R: UWS (6)
Pres: 27%
Outcome: UWS



65 yo man
4 months post anoxia
CRS-R: UWS (6)
Pres: 32%
Outcome: Death



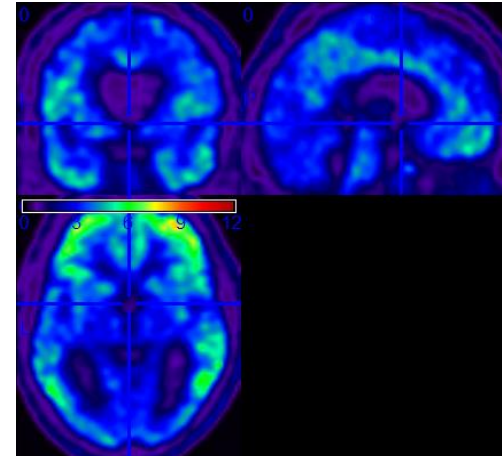
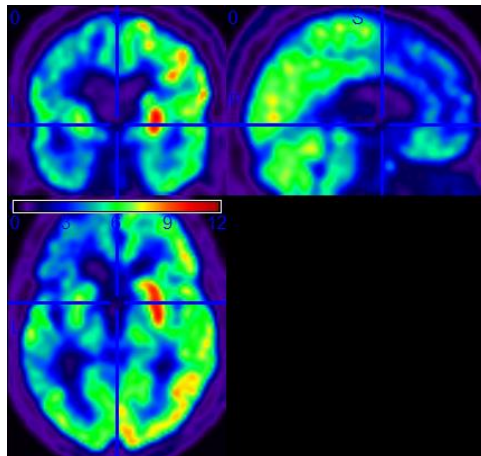
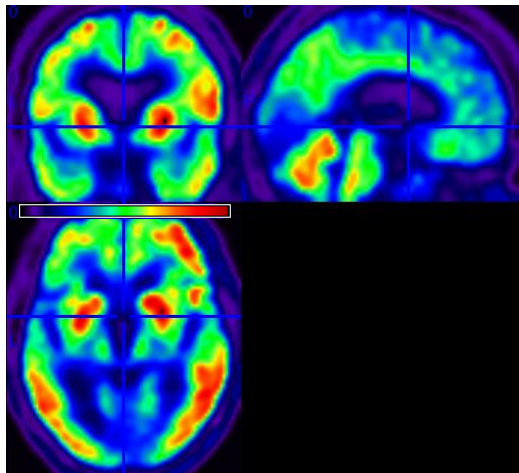
SUV - MCS



27 yo man
51 months post TBI
CRS-R: MCS (12)
Pres: 81%
Outcome: MCS

78 yo woman
69 months post TBI
CRS-R: MCS (16)
Pres: 72%
Outcome: MCS

38 yo man
7 months post anoxia
CRS-R: MCS (11)
Pres: 43%
Outcome: MCS



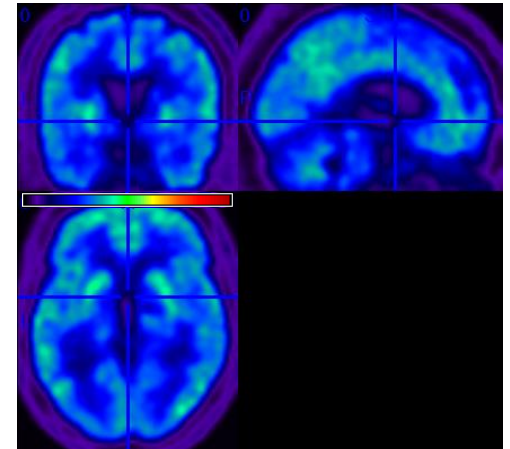
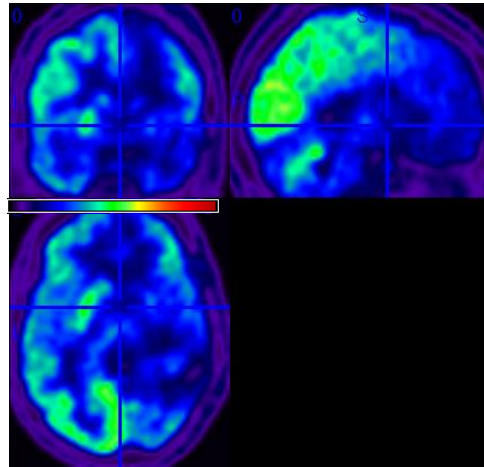
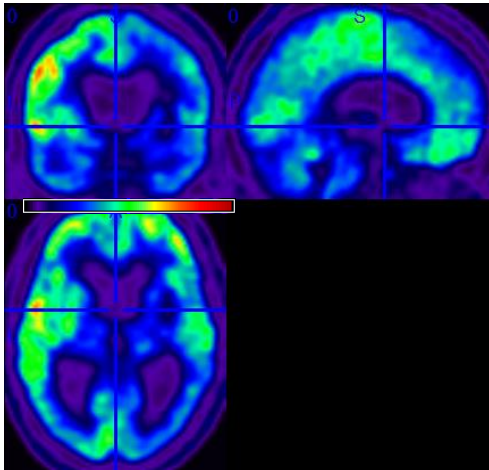
SUV – MCS*



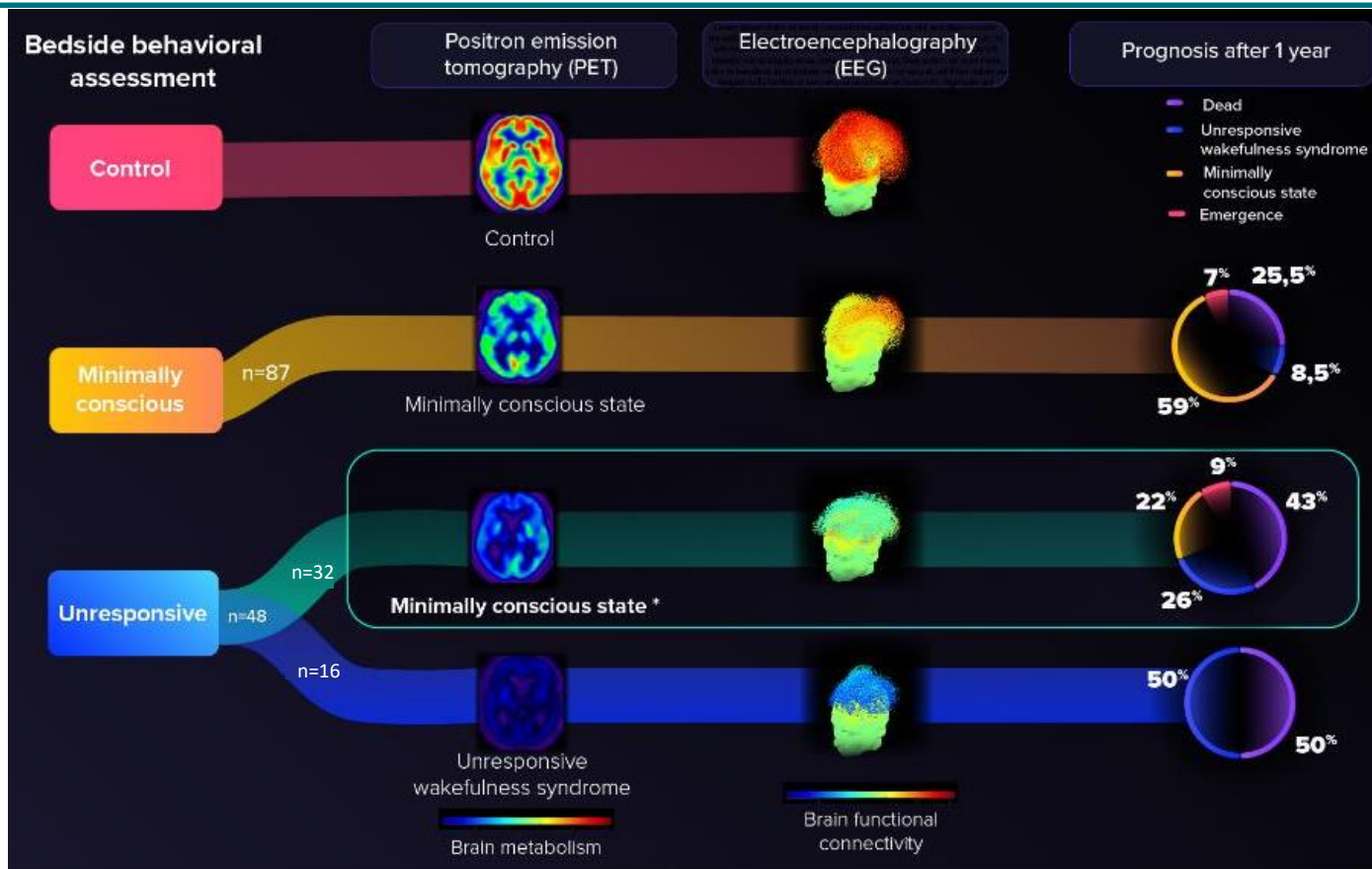
25 yo woman
7 months post CA/TBI
CRS-R: UWS (4)
Pres: 50%
Outcome: death

27 yo woman
4 months post stroke
CRS-R: UWS (6)
Pres: 43%
Outcome: MCS

54 yo man
1.5 months post meningitis
CRS-R: UWS (5)
Pres: 52%
Outcome: Death



Diagnostic tool



Thank you for your attention.

Questions?

Contact: athibaut@uliege.be or
Jitka.annen@uliege.be